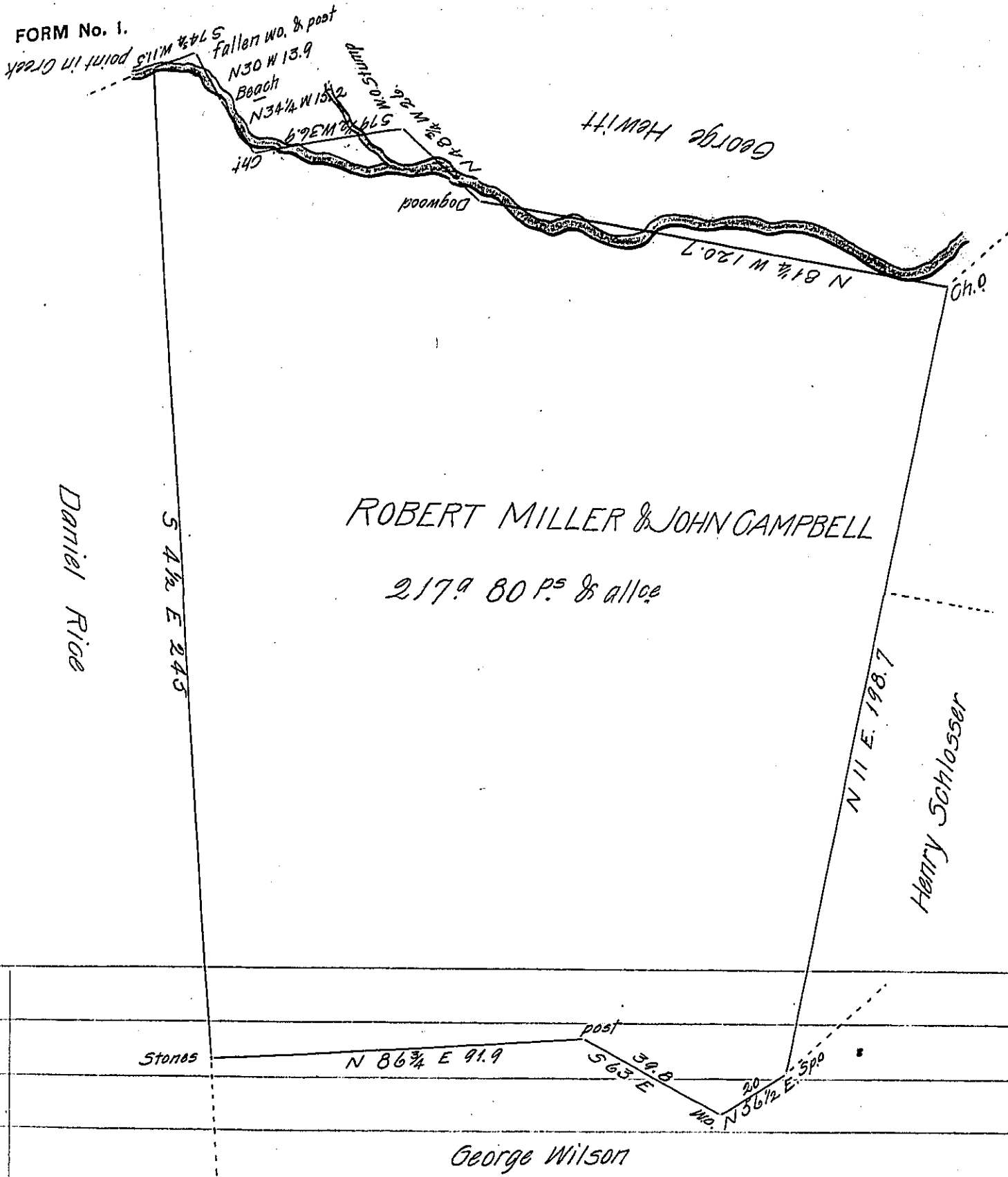


FORM No. 1.



Situate in Manallen Township Adams County Being part of a larger tract said to contain 535.9 1/2 A.P.s & allce. Surveyed April 3^d 1788 by Moses McClean D.S. In pursuance of 2 warrants granted to Robert Miller & John Campbell one for 100.9 dated April 1st 1752 the other for 200.9 dated October 18th 1753 the whole now found to contain 514.9 & allce. Divided off from the residue March 20th 1811 for John Schlosser containing two hundred & seventeen acres eighty perches & allce.

To Andrew Porter Esq.
Surveyor General

By Saml Sloan D.S.

IN TESTIMONY that the above is a copy of the original remaining on file in the Department of Internal Affairs of Pennsylvania, made conformably to an Act of Assembly approved the 16th day of February, 1833, I have hereunto set my Hand and caused the Seal of said Department to be affixed at Harrisburg, this twenty sixth day of December 1905.

Samuel Sloan
Secretary of Internal Affairs.